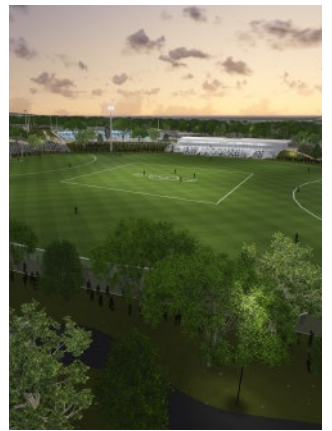
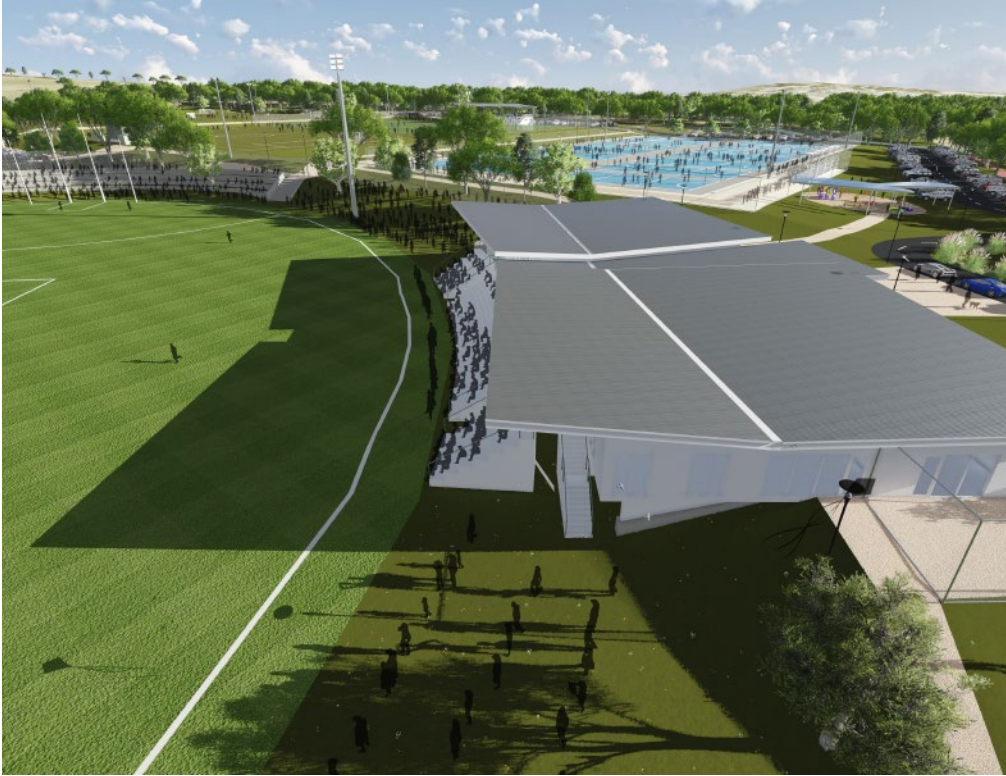




# MOUNT BARKER MASTER PLAN

MOUNT BARKER, SA

GRIEVE  
GILLETT  
ANDERSEN



**In 2009 the District Council of Mount Barker acquired a strategic parcel of land that provides an opportunity for a recreation and community precinct for the growing region. Grieve Gillett Andersen (GGA) were engaged to prepare the Detailed Concept Design for the Regional Level Sport and Recreation Precinct with a primary focus on positioning, design and costing.**

GGA lead a multidisciplinary team (JP+D, @ Leisure Planners, CPR, BESTEC, GTA and RLB) to develop a concept that reflects current and future sporting needs, responds to site conditions, provides vehicle and pedestrian access, incorporates community facilities (shelters, playground and fitness trail) within a natural setting to complement the Mount Barker landscape.

The viability of the facility will require ongoing funding, management, maintenance and commercial income with input from multiple bodies. The design has considered the relationship between various sporting codes, the ability for external events and income to be accommodated, a staging plan that will create initial impact and attract regional level funding, and an implementation plan that will be adaptable for Council over the anticipated 20–25 year development period.

**MOUNT BARKER MASTER PLAN**  
MOUNT BARKER, SA  
COMPLETED: 2015

**CLIENT**  
DISTRICT COUNCIL OF MOUNT  
BARKER

**PROJECT VALUE**  
\$27.5 MILLION (ESTIMATE)

